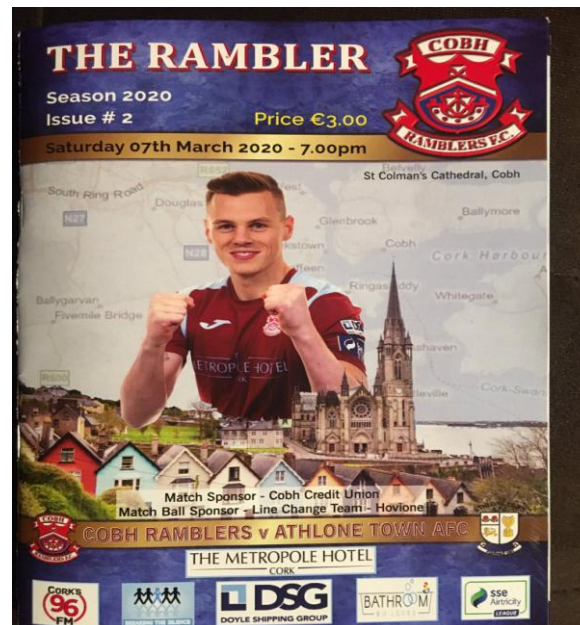
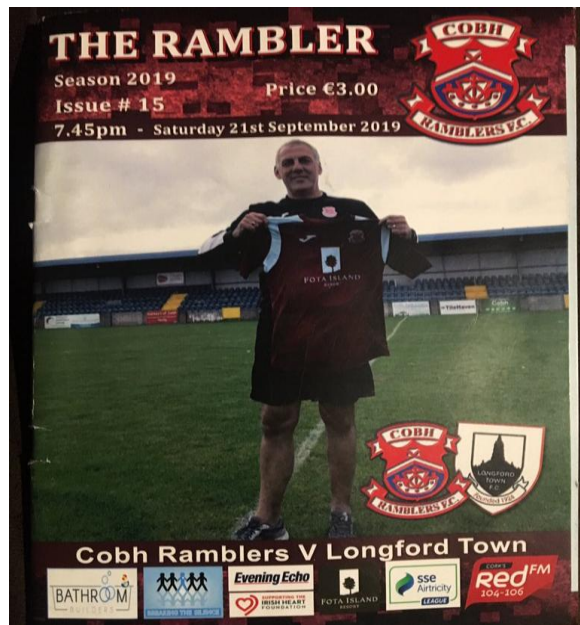


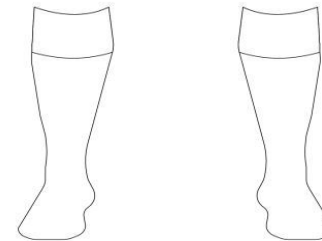
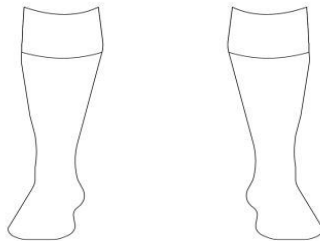
3rd / 4th Class

1. A child ticket to see Cobh Ramblers play at St Colman's Park costs €5. If I have €50 how many tickets can I buy?
2. The match programme is €3. How much change will I get if I give the seller €20? What if I bought 4 programmes?



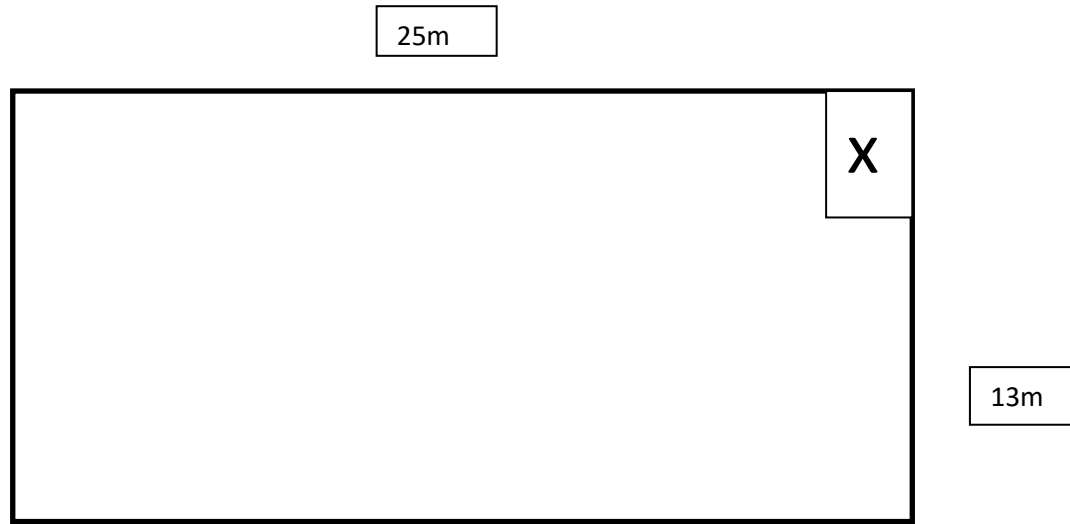
Time for a little break! Design and colour your own version of your home and away club kit. If you need help with your club colours check out your club's online shop or website.

Jersey- €30
Shorts- €20
Socks- €10



3. (a) How much is a jersey? _____ (b) How many could I buy with €70? ____ (c) Would I have any change? _
4. (a) Could I buy shorts and socks if I had €20? _____ (b) How much more money would I need?
5. If you had €50 to spend what would you buy? Would you have any change?

5th / 6th Class




1. Here is a picture and plan of the St Colman's Park dressing rooms. Calculate both the area and perimeter of the room.
2. If the door was placed at x where would you place the showers, toilets and benches? Mark them in the plan and give reasons for your answer.

Extension Work

3. St Colman's Park has 10 types of rooms: Boardroom, Manager's Office, Toilets, Shop, Ticket Office, Kitchen, Lounge, Laundry Room, Kit Room, Referee's Room. Write a list from biggest to smallest and discuss your reasoning with a partner.
4. Draw a plan of each room using the plans below. The rooms may be an outline or contain as much detail as you would like to see in a plan.



Upstairs



Downstairs