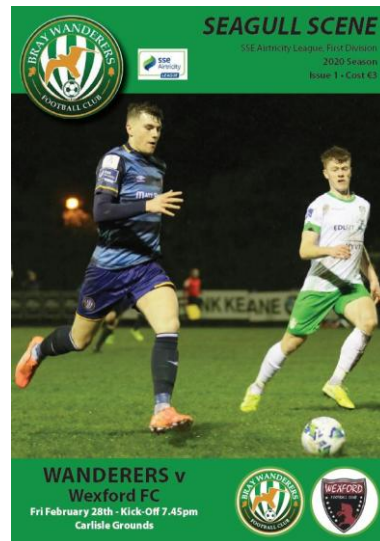


3<sup>rd</sup> / 4<sup>th</sup> Class

1. A child ticket to see Bray Wanderers play at the Carlisle Grounds costs €5. If I have €50 how many tickets can I buy?
2. The match programme is €3. How much change will I get if I give the seller €20? What if I bought 3 programmes?

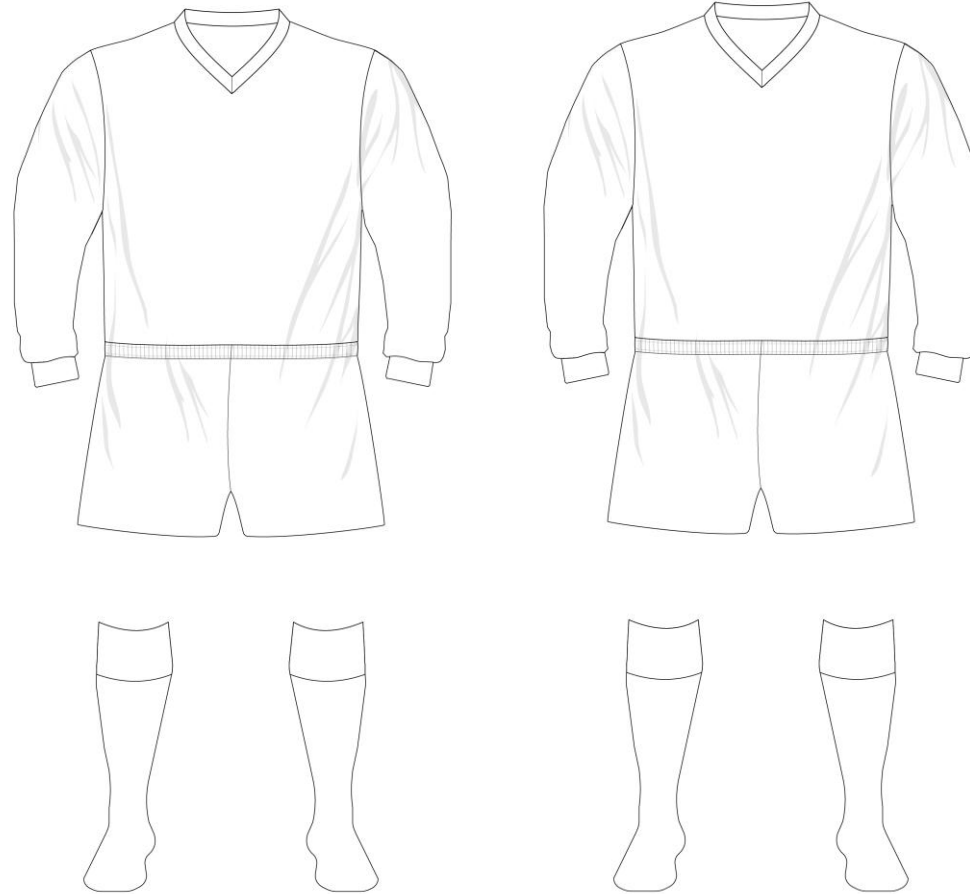


## Maths

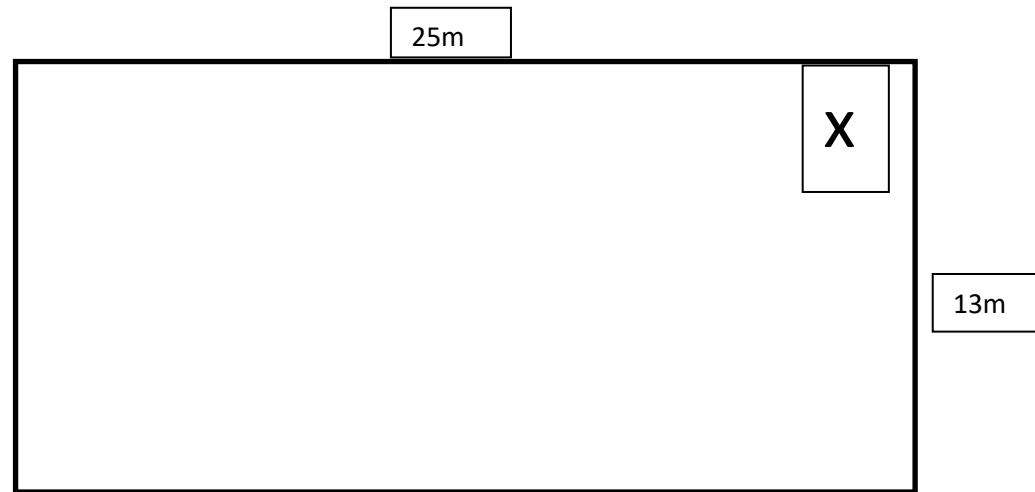
## Measures

Time for a little break! Design and colour your own version of your club kit- home and away. If you need help with your club colours check out your club's online shop or website.

*Jersey- €30*  
*Shorts- €20*  
*Socks- €10*



3. (a) How much is a jersey? \_\_\_\_\_ (b) How many could I buy with €70? \_\_\_\_ (c) Would I have any change? \_
4. (a) Could I buy shorts and socks if I had €20? \_\_\_\_\_ (b) How much more money would I need?
5. If you had €50 to spend what would you buy? Would you have any change?



1. This is a plan of the Carlisle Grounds dressing rooms. Calculate both the area and perimeter of the room.
2. If the door was placed at x where would you place the showers, toilets and benches? Mark them in the plan and give reasons for your answer.

**Extension Work**

3. The Carlisle Grounds has 10 types of rooms: Boardroom, Manager's Office, Toilets, Shop, Ticket Office, Kitchen, Lounge, Laundry Room, Kit Room, Referee's Room. Write a list from biggest to smallest and discuss your reasoning with a partner.

4. Draw a plan of each room using the plans below. The rooms may be an outline or contain as much detail as you would like to see in a plan.

